

BUSHING COVER

ASSEMBLY + HOTSTICK INSTALLATION



SUPPLIES

- Bushing cover, BC-D01, featured here
- Hotstick (not included)

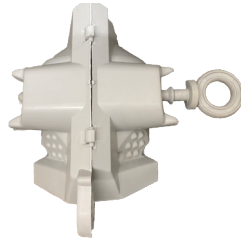


BC-D01

INSTRUCTIONS



Connect hinge to connect both halves.



Insert eye bolt through one side of the shell. It can accept the bolt on either side.



Inset the nut over the eye bolt as it comes through the other side of the shell. Screw the eye bolt through the nut so it locks in place.



There is a lip on the bolt designed to accept the nut in only one way. Once the nut is over the lip it is designed not to come off when unscrewed. It is not a breakaway nut.



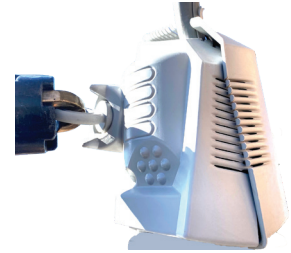
Hook and lock the hotstick through the eye screw.



Position the bushing cover over the first shed of the insulator.



Adjust the fit by turning the eye screw clockwise until a tight fit has been achieved. DO NOT OVER-TIGHTEN.

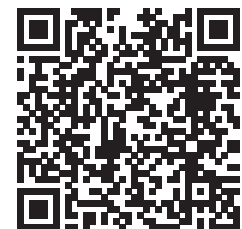


Installation is complete once the fit is confirmed to be tight.

VIDEO TUTORIAL

Scan the QR code to see a quick video of a live install >

Or visit powerlinesentry.com/install-support for a full library of support materials.



TRUE POWER RELIABILITY DEMANDS EFFECTIVE WILDLIFE PROTECTION
[POWERLINESENTRY.COM](https://powerlinesentry.com) | [INFO@POWERLINESENTRY.COM](mailto:info@powerlinesentry.com) | 970.599.1050