

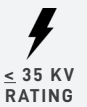
UNIVERSAL CUTOUT COVERS



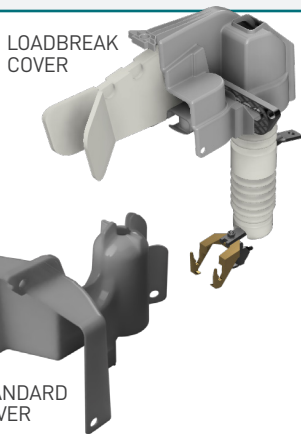
PATENT # D892051S



CUTOUT COVERS INSULATE EXPOSED PORTIONS OF CUTOUT EQUIPMENT TO PREVENT ELECTROCUTION EVENTS AND POWER OUTAGES.



ADJUSTS TO FIT



ONLY ADJUSTABLE COVER IN THE INDUSTRY

> STANDARD COVER FITS MOST 100 AND 200 AMP STANDARD CUTOUTS

> LOADBREAK COVER FITS ABB, HUBBLE-CHANCE, ALUMA-FORM, MACLEAN STYLE LOADBREAK CUTOUTS

NECK ADJUSTS TO THE SIZE OF THE CUTOUT FOR A TIGHT AND SECURE UNIVERSAL FIT

FULLY COVERS ALL ENERGIZED PORTIONS

ALLOWS INSULATOR SHEDS TO NATURALLY CLEAN

OPEN DESIGN ALLOWS FOR EASY ACCESS DURING INSPECTIONS

STANDARD COVER ALLOWS FOR LOADBREAK TOOL ACCESS

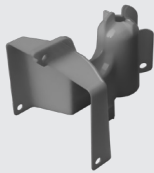
EASIEST HOTSTICK INSTALL IN THE INDUSTRY - NO LOCKING PINS



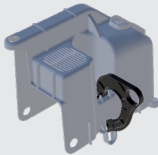
SYSTEM RELIABILITY SOLUTIONS
POWERLINESENTRY.COM // SALES@POWERLINESENTRY.COM // 970.599.1050



UNIVERSAL CUTOUT COVERS



UNIVERSAL
CUTOUT COVER
CT-D02



UNIVERSAL
LOADBREAK CUTOUT COVER
CT-D04

SKU	FIT	SHED DIAMETER	QTY
CT-D02	FMOST 100 AND 200 AMP STANDARD DISTRIBUTION CUTOUTS	FITS STINGER SIZES #6-4/0 WITH INSULATING LINE HOSE	20
CT-D04	ABB, HUBBELL-CHANCE, ALUMA-FORM, MACLEAN STYLE LOADBREAK CUTOUTS	≤ 5"	20

TESTS	RESULTS
IEEE 1656 / 5.2 WET WITHSTAND	>18 KV
IEEE 1656 / 5.3 WET POWER FREQUENCY FLASHOVER	>95%
IEEE 1656 / 5.4 LIGHTNING IMPULSE WITHSTAND	125KV
IEEE 1656 / 5.5 COLD TEMPERATURE TEST	PASSED / -25C
IEEE 1656 / 5.6 ULTRAVIOLET AGING	5,000 HOURS
WIND RETENTION	>90 MPH
UL 94 FLAMMABILITY OF PLASTIC MATERIALS	V-0
PROPERTIES	RESULTS
ASTM D149 DIELECTRIC STRENGTH	467 V/MIL (18.4 KV/MM)
ASTM D2303 INCLINED PLANE TRACKING AND EROSION: INITIAL TRACKING (VARIABLE VOLTAGE)	4.0 KV
ASTM D638 TENSILE STRENGTH @ YIELD	2,400 PSI (17 MPA)
ASTM D790 FLEXURAL MODULUS	140,000 PSI (966 MPA)
REGULATORY	ROHS COMPLIANT

