

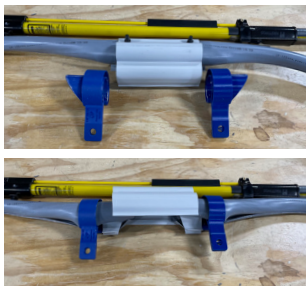
# FLEXIBLE INSULATOR COVERS INSTALLATION INSTRUCTIONS

INSTALLATION WITH TOOLS / CAN BE INSTALLED WITH HOTSTICK OR MANUALLY

## SUPPLIES

- Flexible Insulaltaor Cover (CF cap shown here)
- Flexible Insulator Cover Hotstick Install Tool Kit (not included)
- 2x Hotsticks (not included)

## INSTRUCTIONS



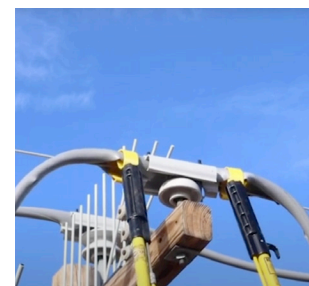
With points of each tool facing away from the cap, insert a tool into each sleeve. Tool handles will be facing as shown. It is necessary to have each handle on the lineman-facing side of the conductor during installation.



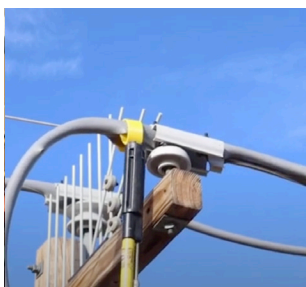
Hook a hotstick to each of the attachment tools/sleeves and pull down so that hotsticks and tools are aligned in a single plane.



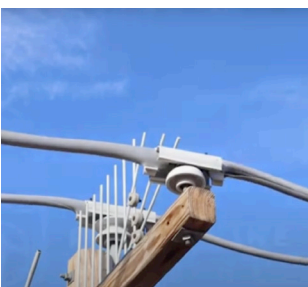
Using the tools to support the sleeves and guide the cap, position the cap over the insulator pin.



Snap cap over the insulator pin by pullin down until it covers the insulator neck and hooks under the crown and/or tie wire.



Pull the hotstick (still engaged in the attachment tool) along the conductor and away from the cap so that the line hose sleeves wrap around the conductor. Repeat on the other side.



Once installed, the cap is locked into place and the sleeves are wrapped along the conductor.

SCAN HERE  
FOR INSTALL  
VIDEO >

