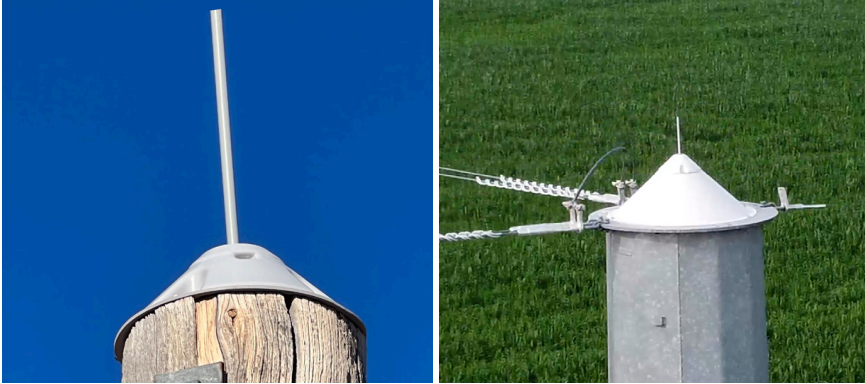


Raptor Guard™ pole top caps

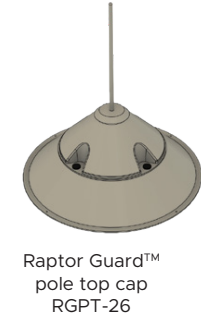
Perching excluders



Pole top caps isolate dangerous energized areas and deter birds of prey from using structures as hunting perches.



- Blunt-tipped spike deters perching, as proven by live flight cage raptor tests conducted in collaboration with the Rocky Mountain Raptor Program
- Flush mounting protects the pole top from weathering deterioration, perching, and nesting activity
- Engineered to maintain structural integrity under extreme environmental conditions for decades
- Durability and effectiveness have been highlighted in pilot programs by the Washington State Fish and Wildlife and the bureau of I and management
- Can be installed on wood, steel, or composite



| SKU | Diameter | Recommended pole top diameter | Min qty |
|-----------|---|----------------------------------|---------|
| RGPT-8 | 8"/20.32 cm | "7" - 9"/17.78 cm - 22.86 cm | 5 |
| RGPT-10 | 10"/25.4 cm | "9" - 11"/22.86 cm - 27.94 cm | 5 |
| RGPT-12 | 12"/30.48 cm | "11" - 13"/27.94 cm - 33.02 cm | 5 |
| RGPT-14 * | 14"/35.56 cm | "13" - 15"/33.02 cm - 38.1 cm | 5 |
| RGPT-16 * | 6"/40.64 cm | "15" - 17"/38.1 cm - 43.18 cm | 5 |
| RGPT-18 * | 18"/45.72 cm | "17" - 19"/43.18 cm - 48.26 cm | 5 |
| RGPT-20 * | 20"/50.8 cm | "19" - 21"/48.26 cm - 53.34 cm | 5 |
| RGPT-22 * | 22"/55.88 cm | "21" - 23"/53.34 cm - 58.42 cm | 5 |
| RGPT-24 * | 24"/60.96 cm | "23" - 25"/58.42 cm - 63.5 cm | 5 |
| RGPT-26 * | 26"/66.04 cm | "25" - 27" / 63.5 cm - 68.58 cm | 5 |
| RGPT-28 * | 28"/71.12 cm | "27" - 29"/68.58 cm - 78.66 cm | 5 |
| RGPT-30 * | 30"/76.2 cm | "29" - 31"/78.66 cm - 78.74 cm | 5 |
| RGPT-32 * | 32"/81.28 cm | "31" - 33"/78.74 cm - 83.82 cm | 5 |
| RGPT-34 * | 34"/86.36 cm | "33" - 35"/83.82 cm - 88.9 cm | 5 |
| RGPT-36 * | 36"/91.44 cm | "35" - 37"/88.9 cm - 93.98 cm | 5 |
| RGPT-38 * | 38"/96.52 cm | "37" - 39"/93.98 cm - 99.06 cm | 5 |
| RGPT-40 * | 40"/101.6 cm | "39" - 41"/99.06 cm - 104.14 cm | 5 |
| RGPT-42 * | 42"/106.68 cm | "41" - 43"/104.14 cm - 109.22 cm | 5 |
| RGPT-K | Adapter kit for banding to non-wood pol | | 5 |

* Includes adapter kit for banding to non-wood poles

| Tests | Results |
|---------------------------------|------------|
| ASTM D-638 tensile strength | 70,000 PSI |
| ASTM D-695 compressive strength | 20,000 PSI |
| ASTM D-149 dielectric strength | 50 kV/in |

