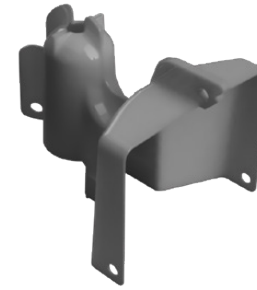
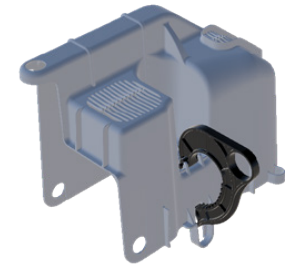


# Universal cutout + loadbreak cutout covers






Universal cutout cover  
CT-D02



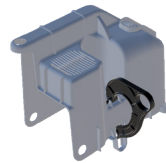
Universal loadbreak cutout cover  
CT-D04

Cutout covers insulate exposed portions of cutout equipment to prevent electrocution events and power outages.

-   
 V-O  
flame retardant
-   
 Very hotstick  
friendly
-   
 Rated at <35 kV  
insulation

## Adjusts to fit

- Only adjustable cover in the industry
- Standard cover clips provide height adjustment for universal secure fit on most polymer and porcelain 100 and 200 amp cutouts
- Loadbreak cover has adjustable internal diameter, providing a universal secure fit on ABB, Hubbell-Chance, Aluma-Form, and Maclean style loadbreak cutouts (shed widths up to 5")
- Neck adjusts to the size of the cutout for a tight and secure universal fit
- Fully covers all energized portions
- Allows insulator sheds to naturally clean
- Open design allows for easy access during inspections
- Standard cover allows for loadbreak tool access
- UL 94 V-0 flame retardant material
- Hotstick friendly, snaps into position - no locking pins



Loadbreak cover



Standard cover



Loadbreak raptor claw™



standard cover clip

videos +  
more



SKU	Fit	Shed diameter	kV rating	Min qty
CT-D02	100 and 200 amp polymer and porcelain cutouts	< 3"/7.62 cm	< 35	20
CT-D04	ABB, Hubbell-Chance, Aluma-Form, and Maclean style loadbreak cutouts (shed widths up to 5")	< 5"/12.7 cm	< 35	20

Tests	Results
IEEE 1656 / 5.2 wet withstand	>18 kV
IEEE 1656 / 5.3 wet power frequency flashover	>95%
IEEE 1656 / 5.4 lightning impulse withstand	125 kV
IEEE 1656 / 5.5 cold temperature test	Passed/--25°C
IEEE 1656 / 5.6 ultraviolet aging	5,000 hrs
Wind retention	CT-D02: >150MPH   CT-D04: >120MPH
UL 94 flammability of plastic materials	V-0
ASTM D149 dielectric strength	467 V/MIL (18.4 kV/mm)
ASTM D2303 inclined plane tracking and erosion: initial tracking (variable voltage)	4.0 kV
ASTM D638 tensile strength @ yield	2,400 PSI (17 MPA)
ASTM D790 flexural modulus	140,000 PSI (966 MPA)
<b>Regulatory</b>	<b>RoHS compliant</b>

